



# Pennsylvania 4-H Alumni Newsletter

Winter/Spring 2001

## Alumni Volunteer to be 4-H Leaders

Today, if you were to survey the nearly 11,000 Pennsylvania adult 4-H leaders, you would find that a very high percentage of them were involved in 4-H as youth. Why do alumni continue to be involved with 4-H as leaders?

Here are some of the most common reasons given:

- I personally had such a great experience with 4-H that I feel the youth in my community should have the same opportunity.
- I want my children to have the same positive opportunity as I had growing up as a child.
- 4-H allows me to give back to others some of the things that I gained from being in 4-H.
- I continue to learn and grow through 4-H as an adult.
- 4-H continues to be an important fun part of my life.
- 4-H just keeps me young.

Which of the above statements best describes your reason for continuing to be involved with 4-H?

Robert B. Lewis, Professor  
rbl3@psu.edu

## 4-H and Schools: A Great Partnership

A school enrichment marketing survey was conducted by Dr. Claudia Mincemoyer and found that 92% of Pennsylvania's 67 counties conduct school enrichment programs in over 2000 classrooms.

To address this growing audience, statewide marketing materials were developed. A series of 17 project fact sheets are available on the 4-H web site <http://pa4h.cas.psu.edu/school.html>. Counties can customize the fact sheets and enter different fees for participation, length of programs, teacher responsibility, grade level and teacher responsibility. Marketing folders were printed to hold the fact sheets that provide information about Pennsylvania 4-H and the curricula available to educators, after-school providers, other-youth serving agencies and funders.

Dr. Mincemoyer worked with design consultants, Judith Richardson and Jackie Rosenfeld from Outreach Marketing Consulting at Penn State to develop the concept and an appealing design.

Claudia Mincemoyer, Assistant Professor  
cmincemoyer@psu.edu



## **New Curricula for 2001-2002**

The Curriculum Management Team met in February to review each curriculum committee's proposed projects for the coming year. The listing below is a summary of the projects to be purchased or developed. For more information about a specific project, contact the faculty/staff member listed. We are very excited about offering more and up-to-date projects for our 4-H'ers!

### **Adventures with your Camera**

Contact: Claudia Mincemoyer

### **Bicycle Adventures**

Contact: Claudia Mincemoyer

### **Babysitting Beginnings**

Contact: Claudia Mincemoyer

### **Clothing Project Sheets**

Contact: Jan Scholl

### **Collectibles**

Contact: Claudia Mincemoyer

### **Colverbuds Curriculum**

Contact: Claudia Mincemoyer

### **Computer Mysteries**

Contact: Patti Fantaske

### **Endangered Wildlife Project**

Contact: Sandy Smith or Margaret Brittingham

### **Everyday Living**

Contact: Jan Scholl

### **Fashion Revue Activity Guide**

Contact: Jan Scholl

### **Food and Nutrition Series**

Contact: Jan Scholl, Katherine Cason, Patreese Ingram

### **Inter-Intra- State Youth Exchange Project**

Contact: Patreese Ingram,

### **Generation Celebration/Celebrate Your Family through 4-H**

Contact: Matthew Kaplan

### **Kids and Kash**

Contact: Cathy Bowen

### **Linking Lives: Proverbs to promote understanding across generations and cultures**

Contact: Matt Kaplan, Patreese Ingram, Claudia Mincemoyer

### **Market Goat Reference Guide**

Contact: Bob Mikesell

### **A Palette of Fun-Arts/Crafts**

Contact: Claudia Mincemoyer

### **Supermarket Savvy (Pilot)**

Contact: Natalie Ferry

### **Start Your Engines**

Contact: Christy Kohler

## **4-H Curriculum on the Internet**

Dr. Claudia Mincemoyer, 4-H Curriculum Development specialist, conducted a study to determine the percentage of 4-H volunteer leaders who own a computer, have access to the internet, and their frequency of access. Additionally, the likelihood that 4-H volunteers would access the internet for curriculum projects and resources was examined. Information from this survey will help provide statewide direction to policies and procedures relating to 4-H curriculum resource availability on the Internet.

County 4-H coordinators were sent 15 surveys to mail to a randomly selected sample of 4-H volunteers. Of the 67 counties, 59 participated in the study. A total of 885 surveys were mailed to 4-H volunteers. 589 surveys were returned (62%).

### ***Computer ownership and internet access***

Eighty-four percent of the 4-H volunteers in Pennsylvania have a computer in their home. Over half (54.2%) of the 4-H volunteers in Pennsylvania who work have access to a computer at work. Of those who don't have a computer at home, 3.9 % have access to a computer at work. Thus, about 88% of the 4-H volunteers have a computer available for their use.

### ***Frequency of access to internet***

The frequency of access to the Internet on the average was reported by the 4-H volunteers. About 19% of 4-H volunteers are accessing the Internet at least once/week with 34% accessing the Internet more than once each week. Thus, over half of the 4-H volunteers are on the Internet weekly.

### ***Access curriculum information and resources on internet***

Volunteers were asked how likely they were to access 4-H curriculum materials and resources from the Internet for use with 4-H projects. Forty-six percent of the 4-H volunteers were very likely or somewhat likely to access 4-H curriculum materials on the Internet if available. Twenty-four percent indicated that they were somewhat likely to access materials from a web site. About 12% indicated that they were not very likely to access a web site for curriculum resources.

For additional information about the study, contact; Claudia Mincemoyer, [cmincemoyer@psu.edu](mailto:cmincemoyer@psu.edu)

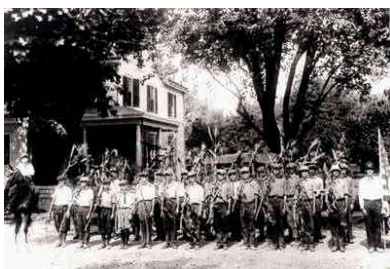
## Penns Woods Leadership Conference

In 2000, Penn State Cooperative Extension became involved in an endeavor with Shaver's Creek Environmental Center to offer an educational experience for directors and counselors of residential and day camps. In 2000, about 40 adults and teens from church camps, private camps, and Cooperative Extension attended the inaugural program at Stone Valley.

The venue for the 2001 program changed to the Hartman Center in Milroy, PA to provide more space for workshops. Participants had the opportunity to become certified by the American Red Cross in first aid and adult CPR. The workshop agenda also included group facilitation and recreational inclusion of children and adults. To help participants develop new, innovative, experiential programming during camps, workshops were also offered on puppetry, recreational dance, entomology, Pennsylvania songbirds, and clowning.

Barry Jolliff, a self-identified FUNraiser, was a featured presenter at the conference. Barry has led recreation in one form or another to youth of all ages throughout Ohio and neighboring states. Participants also brought programming ideas to share.

Christy Kohler, Youth Program Coordinator  
cek4@psu.edu or 814-863-3828.



## Celebrating 4-H Centennial

4-H will be celebrating its 100th anniversary in 2002. Visit a web site dedicated to commemorating the 4-H centennial at <http://www.4hcentennial.org/>. You may even send special [postcards](#) from the web site to remind people of 4-H's 100th anniversary.

Each month, the web site features a decade of 4-H history. See the corn club boys of Chester County assembled for a tramp while at the Boy's Camp, 1915 at <http://www.4hcentennial.org/decade2/cornclubPA1915.asp>.

It's not too early to start planning special 4-H centennial activities in your county.

Michael Martin, Special Assistant to the Vice President, Outreach and Cooperative Extension

## Pennsylvania 4-H Capital Days April 22-24, 2001, Harrisburg, PA

Pennsylvania 4-H Capital Days is an educational two-day program sponsored each April by The Pennsylvania State University Cooperative Extension. The purpose of this citizenship program is to increase the participating 4-H teens' understanding of the roles and functions of our state-level government.

Pennsylvania 4-H Capital Days is conducted for the purpose of providing 4-H teen members with an opportunity for studying the process of legislation, meeting and talking with officials of state government, visiting various facilities of state government, developing an appreciation for Pennsylvania's heritage, relating the 4-H educational program to government officials, and to gain a better understanding of political issues

During the event 4-H members will visit one of the following agencies: Game Commission, Department of Transportation, Commission on Crime and Delinquency, Pennsylvania State Police, Department of Agriculture, Farm Show Complex, Department of Health, Department of Conservation and Natural Resources, Department of Education, Department of Community and Economic Development, or Department of Environmental Protection. After the 4-H members visit their agency, they will work as a group to develop a grant proposal, up to \$100,000 for their agency. The groups present their grant proposal to a grant review committee who decides if the proposal should be funded.

On Tuesday morning the 4-H members have breakfast with their state legislators. After breakfast is a tour of the Capitol Building. During the tour 4-H members have an opportunity to visit with their legislators in their office.

4-H members from across Pennsylvania participate at 4-H Capital Days each year. Not only do they learn more about Pennsylvania Government, they have fun and make new friends.

Phil Hoy, Youth Program Management Coordinator  
phoy@psu.edu

## Pennsylvania 4-H Alumni Highlights

We need to hear from YOU to get this section of the 4-H Alumni Newsletter off the ground. Please send stories of your accomplishments or other fun facts to:

Pennsylvania 4-H Alumni Highlights  
The Pennsylvania State University  
323 Agricultural Administration Bldg.  
University Park, PA 16802

Department of Agricultural and Extension Education  
The Pennsylvania State University  
323 Agricultural Administration Building  
University Park, PA 16802-2601

**NONPROFIT ORG.  
U.S.POSTAGE  
PAID  
UNIVERSITY PARK PA  
PERMIT NO. 1**

## Web Page for our 4-H Alumni

The Pennsylvania 4-H web site now features a page specifically for our 4-H alumni. Visitors may sign up on our alumni list (as you did, only on-line). These newsletters are available in color from the page as well. In the near future, a guestbook will be available where you may leave a message, look for an old 4-H friend, and tell others what you are up to now. View the page at: <http://pa4h.cas.psu.edu/4halumni.html>.



18 U.S.C. 707

**PENNSTATE**



**College of Agricultural Sciences**

**This publication is available in alternative media on request.**

The Pennsylvania State University is committed to the policy that all persons shall have equal access to programs, facilities, admission, and employment without regard to personal characteristics not related to ability, performance, or qualifications as determined by University policy or by state or federal authorities. The Pennsylvania State University does not discriminate against any person because of age, ancestry, color, disability or handicap, national origin, race, religious creed, sex, sexual orientation, or veteran status. Direct all inquiries regarding the nondiscrimination policy to the Affirmative Action Director, The Pennsylvania State University, 201 Willard Building, University Park, PA 16802-2801; Tel. 814-865-4700/V; 814-863-1150/TTY.

-----  
detach here

**YOUR TAX-DEDUCTABLE CONTRIBUTION WILL HELP US MAKE THE 4-H PROGRAM STRONGER. THANK YOU!**

**Yes, I would like to support 4-H Programs in Pennsylvania by:**

- Providing a contribution to the 4-H/Youth Development fund in the amount of:     \$20     \$50     \$100     \$\_\_\_\_\_
- Becoming a 4-H volunteer leader in \_\_\_\_\_ County.

Please detach and mail to: Pennsylvania 4-H, 401 Ag Administration Bldg., University Park, PA 16802.