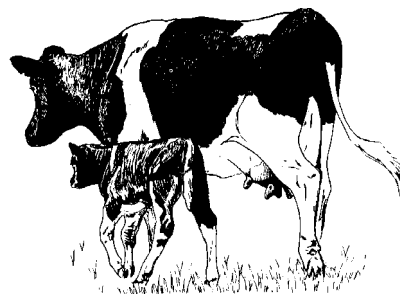


DAIRY BOWL

Contact Person: Dr. Michael L. O'Connor, Extension Dairy Specialist, (814) 863-3913



Purposes:

This event is designed:

1. To support the county 4-H dairy program.
2. To broaden the 4-H interaction experiences of youth and adults from across the Commonwealth.
3. To challenge 4-H'ers skills & knowledge of the dairy industry.
4. To recognize 4-H'ers demonstrated abilities of the dairy industry.
5. To better acquaint 4-H'ers with the faculty, services, and facilities of The Pennsylvania State University.

Objectives:

1. To stimulate 4-H'ers to learn about the entire dairy industry.
2. To select a team (or teams) to represent Pennsylvania at the National Contest (and other inter-state contests).

Eligibility:

1. Contestants must be currently enrolled in a 4-H dairy project.
2. Participants must have passed their 13th birthday and not have passed their 19th birthday as of January 1 of the current year. See NOTE under Opportunities for age requirements for national competition.
3. Contestants must not have previously participated in the "North American Invitational 4-H Dairy Quiz Bowl," North American International Livestock Exposition.
4. Contestants can be college students, but must not have enrolled in or audited a dairy science or animal science course prior to the fall semester of the current year.
5. Each county may enter one team. A team may be composed of 3 or 4 members, one of which will be designated captain. There will be no individual competition.
6. If there's any doubt about a member's eligibility for this contest, questions should be directed to Christy Bartley, Dept. of Ag. and Extension Education, (814) 863-3828.

Contest Organization and Content:

1. Teams will compete in a series of one-on-one double elimination contests until the top team is chosen. The teams will be assigned at random to the first round of competition before the contest. The first round will be against another team that has not previously played unless there is an odd number of teams. The second round will be against either a winning team or a losing team, depending on the first contest. A second loss eliminates a team from continuing competition. Questions will be a mixture of multiple choice, true/false, or short answer.
2. Competition between teams will be in three (3) phases:

Phase A:

- a. The teams will answer the same eight questions, one team at a time. The second team will enter the room after the first team is finished with Phases A and B.

- b. Each team member in rotation will be asked a question and allowed 5 seconds to begin his or her answer.
- c. Correct answers are worth ten (10) points with no deduction for incorrect answers.
- d. No teammate assistance may be offered or received.

Phase B:

- a. Each team will be asked five (5) questions of a higher degree of difficulty, one team at a time.
- b. Answers are to be given by the team captain, but team members may consult before the captain gives the answer. The answer must be started within fifteen (15) seconds.
- c. Correct answers are worth ten (10) points with no deductions for incorrect answers. Note that there are some questions for which partial credit may be obtained.

Phase C:

- a. A total of ten (10) questions will be asked to both teams at the same time. The level of difficulty is approximately the same as Phase B questions.
 - b. Questions correctly answered in Phase C will be worth ten (10)points each.
 - c. There will be no team discussion of questions in Phase C.
 - d. The first team member to signal will begin to answer the question within five (5) seconds after being acknowledged by the judge or lose five (5) points. Any member answering without being acknowledged will lose five (5) points. If an incorrect answer is given, the team will lose five (5) points and a member from the other team has the opportunity to answer the question without having it reread unless the complete question was not read the first time (See F). If the second team answers the question correctly, it will receive ten (10) points. The second team will also lose five (5) points for an incorrect answer.
 - e. If neither team can offer an answer to the question within ten (10) seconds, the moderator will give the answer. Neither team will forfeit points.
 - f. When a signal is pushed before the question is completely read, the moderator shall stop reading the question - that person may answer the question. If correct, the team receives credit. If the answer is incorrect or incomplete, the team will lose five (5) points; the judge may not ask the contestant to explain their answer. The question shall then be completely reread and any member of the other team will have the opportunity to answer it.
3. No bonus questions will be asked at any phase of the contest.
 4. The winning team will be determined by the highest total score from Phases A, B, and C. In the event of a tie, three (3) additional Phase C questions will be asked.

Awards:

1. Merit ribbons will be awarded to individual members of all teams (approximately 33% blue, 33% red, and 33% white).
2. Team ribbons will be awarded to a maximum of ten (10) teams.
3. Plaques will be awarded to individual members of the first place team.

Opportunities:

The first place team will be eligible to compete in the "Invitational 4-H Dairy Quiz Bowl," North American International Livestock Exposition, Louisville, Kentucky, provided all team members meet the eligibility requirements of the contest.

NOTE: Contestants for the national contest must reach their 15th birthday during the current year but not have passed their 19th birthday as of January 1 of the current year to compete in the national contest. You may want to consider this in selection of team members. A first place team with any members not meeting this requirement will be declared ineligible for the national contest, and the trip opportunity will be offered to the next highest placing team. If the first place team consists of only three members, the fourth team member to complete the team for the national contest will be appointed by a representative from the State 4-H Faculty in consultation with Dairy Science Extension.

Resource Materials:

Questions will be obtained from articles published in *Hoard's Dairyman* magazine. Others may be taken from current 4-H materials, extension mimeographs, bulletins and special circulars related to dairy production, management, milk marketing and milk quality. Such publications are produced by dairy, veterinary science, agronomy, agricultural engineering and the milk marketing extension sections at The Pennsylvania State University.