

# Penn State Ag Council Update

June 2007

Contact: Mary Wirth (mfw10@psu.edu) 814-863-2822

<http://collegerelations.cas.psu.edu/>

## Capitol Day Event held in Harrisburg on March 19th

The Penn State Ag Council (PSAC) and the Pa Council of Cooperative Extension Associations (PCCEA) co-sponsored the second annual College Capitol Day on March 19<sup>th</sup>. The day was once again a tremendous success! It was attended by approximately 125 people, consisting of Ag Action Network, PSAC, PCCEA, and Alumni Society members. Advocates delivered information packets to all 253 legislative offices and personally communicated to the legislators the importance of the college's research and extension programs in their communities, businesses, and lives. Feed back from both the participants and the legislative offices indicate that the message was consistent and clear and was very well received. This year the Penn State Grassroots Network, Penn State Alumni Association, Hershey Medical Center, and Penn State Outreach joined with the College, PCCEA, and PSAC to host an evening legislative reception in conjunction with Capitol Day.

## College Budget Update

The state budget process is moving forward. Please take the time to call or email your local legislators as well as the legislative leadership to remind them to support more funding for Penn State agricultural research and extension lines. Support documents are attached.

## Spring Delegate Meeting Held April 12th

The PSAC spring delegate meeting was held on Thursday, April 12<sup>th</sup>, at Celebration Hall in State College. The program was on "Environmental and Economic Sustainability - Emerging Opportunities in Environmental Markets," with the speakers addressing market-based environmental opportunities, including nutrient trading. Copies of the presentations are available by contacting the College Relations office.

## Mark Your Calendar: Fall Delegate Meeting October 29<sup>th</sup>

The fall PSAC delegate meeting will be held on October 29, 2007, at Celebration Hall in State College. Election of board members occurs at the fall meeting; please submit any board nominations to the College Relations office or to nominating committee chair Jim Shirk at [jshirk@wengerfeeds.com](mailto:jshirk@wengerfeeds.com)

## Ag Action Network Legislative Update & Skybox Event

The council hosted the fifth Ag Action Network Legislative Update and Skybox Event on April 21. The group enjoyed a morning training program filled with inspirational speakers, including Chair of the House Ag Committee, Representative Mike Hanna, and Chair of the Senate Ag Committee, Senator Mike Brubaker. The afternoon was spent enjoying lunch and watching the Blue & White game in the Beaver Stadium skybox.

## Dean's Tour Held May 8 - 9

The Pa Landscape and Nursery Association and the Professional Recyclers of PA hosted a Dean's Industry Tour in the Pittsburgh area on May 8 – 9. Stops included the Pittsburgh Zoo, AgRecycle Inc., Fleming's Christmas Tree Farm, Eichenlaub Inc., and Eisler Nurseries. In conjunction with the tour, the Dean hosted an evening reception at PNC Park for college alumni and friends. Any member who would like to host a tour in the future should contact Mary Wirth at [mfw10@psu.edu](mailto:mfw10@psu.edu).

## Mark Your Calendar: Research Tour Planned for September 27th

Mark your calendars! This year's PSAC research tour day is on **Thursday, September 27**, on the Penn State University Park Campus from 9:00 a.m. to 1:30 p.m. The PSAC legislative and program committees changed the date from July to September in an effort to make it easier for legislators to attend. The schedule for the day, along with a response form, will be sent to you via CVENT in August. After invitations are sent, please remember to invite your legislators to attend.

## 2007 PSAC Leadership Awards – Nominations Due by August 1

The Penn State Ag Council Membership Committee is seeking nominations for the 2007 PSAC Leadership Awards. The following individuals have been recognized to date:

### 2003 (Initial Year)

Leadership Award – Walt Peechatka, PennAg Industries  
Youth Leadership Award – Eric Cowden, Penn State Student  
Leadership in Action Award – Arthur Smith, Northeast Equipment Dealers Assoc.

### 2004

Leadership Award – Richard Waybright, Mason Dixon Farm  
Youth Leadership Award – Sherisa Brammer, Penn State Student  
Leadership in Action Award – Pennsylvania Dairy Stakeholders

### 2005

Leadership Award - James Adams, Wenger's Feed Mill, Inc.  
Youth Leadership Award - David Bittner, Penn State student  
Leadership in Action Award - Pennsylvania Trail Stewardship Committee, Pennsylvania Equine Council

### 2006

Leadership Award - Senator Noah Wenger  
Youth Leadership Award - Javier Moreno, Penn State Student  
Leadership in Action Award College of Agricultural Sciences Alumni Society's - Armsby Honor Society

Letters of [nomination](#) are due by August 1 and should be submitted to the College Relations office.

## Mark Your Calendar: 2007 Ag Progress Days

Ag Progress Days (APD) is right around the corner. This year's dates are August 14 - 16. The Council will once again be hanging member banners in the special events building for the Tuesday Alumni luncheon and the Wednesday Government and Industry Day luncheon. These two luncheons attract more than 1,000 people. [Banner forms](#) have been distributed to each council member. Please fill it out and fax or send it to the College Relations office by July 9.

You will be receiving your postcard invitation to the APD luncheons in late June. To register online please go the College Alumni Society website [agalumni.cas.psu.edu](http://agalumni.cas.psu.edu) and click on "Register for APD Luncheons."

The PSAC Membership Committee requests that council members display their "Penn State Ag Council Member" signs at their booths at APD. If your organization does not have a member sign, please contact the College Relations office and we will get one to you.

## Mark Your Calendar: College Ag Career Day to be Held October 9th

The College will be hosting the annual Ag Career Day on Tuesday, October 9<sup>th</sup>, from 9:00 a.m. to 4:00 p.m. at the Bryce Jordan Center. This is a wonderful opportunity to meet and interview College of Agricultural Sciences' students. Information on the event can be found at:

<http://www.cas.psu.edu/docs/casuged/careerDay.html>

**Please distribute this information to your member companies for their participation in this important event.**

## College Press Releases

A great way to keep up with the research and happenings at the College is to subscribe to receive college press releases. If you would like to receive news releases from Penn State's College of Agricultural Sciences via electronic mail, send a blank e-mail message to [join-agscinews-l@lists.cas.psu.edu](mailto:join-agscinews-l@lists.cas.psu.edu), or call 814-863-2713 for more information.

## Position Updates

Charles Strauss – Director of Forest Resources, will be retiring effective March 31, 2008.

Current open positions:

Assistant Professor of Avian Biology

Reproductive Biology Initiative

Assistant/Associate Professor, Equine Science

Assistant/Associate/ Full Professor, Sensory Scientist

## Upcoming Events—Mark Your Calendar

July 18	PSAC College Strategic Planning Session	University Park
July 15	APD Banner Forms Due	University Park
August 1	Leadership Awards Nominations Due	University Park
August 14-16	Ag Progress Days	Rock Springs
August 15	PSAC Board of Directors Meeting	Rock Springs
Oct 9	College Ag Career Day	University Park
Oct 10	PSAC Board Meeting	TBA
Oct 29	PSAC Delegate Meeting	State College

If you do not wish to receive this newsletter, please send an email to [mfw10@psu.edu](mailto:mfw10@psu.edu) and request to be taken off the list.

This publication is available in alternative media on request.

Penn State is committed to affirmative action, equal opportunity, and the diversity of its workforce.

**Penn State Agricultural Council  
and  
Pennsylvania Council of Cooperative Extension Associations  
FY 2007/2008 Funding Request for the  
Penn State College of Agricultural Sciences**



	2002/2003	2003/2004	2004/2005	2005/2006	2006/2007	Governor's 2007/2008	Council's Request
<b>Ag Research</b>	\$24,128,000	\$22,922,000	\$23,094,000	\$23,094,000	\$25,094,000	\$25,094,000	<b>\$28,094,000</b>
<b>Ag Extension</b>	\$27,580,000	\$27,580,000	\$27,787,000	\$27,787,000	\$29,787,000	\$29,787,000	<b>\$32,787,000</b>

**Penn State Ag Council and Pennsylvania Council of Cooperative Extension Associations** endorse the recommendation of the Pennsylvania State Council of Farm Organizations requesting an **additional \$6 million for the Penn State College of Agricultural Sciences** research and extension line items (**\$3 million in each line**) contained in the Penn State appropriation bill to support vital agricultural research and extension for areas of highest priority for Pennsylvania.

**Agricultural Research Request----- \$28,094,000**  
**Agricultural Extension Request----- \$32,787,000**

(These lines are found in The Pennsylvania State University nonpreferred appropriations bill.)

### **The Need to Continue Pennsylvania's Land-Grant Partnership**

- The Penn State College of Agricultural Sciences plays a unique role in serving Pennsylvania as the **sole land-grant institution in the state.**
- This 150 year old partnership between the federal government, state government, county government, and Penn State has historically provided a network of scientific researchers and research stations performing cutting-edge, critical research programs, and a state-wide cooperative extension service that disseminates practical, science-based knowledge into every county in the state.
- Pennsylvania relies on Penn State for research-based solutions to many of Pennsylvania's problems.
- Ag program investments have provided scientific breakthroughs and valuable, applied knowledge that has improved the lives of Pennsylvanians, strengthened the economy, protected the security of our food and fiber systems, and enabled us to remain competitive in international food and fiber markets.
- The Agricultural Research and Agricultural Extension line items in the Penn State appropriations bill constitute Pennsylvania's commitment to this partnership.
- **State appropriated dollars are the foundation for research and extension services provided to the Commonwealth in each of the 67 counties that benefit all Pennsylvanians and address Pennsylvania priorities.**
- **Ag Research and Ag Extension are NOT funded through student tuition dollars, are unique to Penn State, and should to be treated as such.**

**College of Agricultural Sciences  
The Pennsylvania State University  
State Funding Summary  
FY 2007/2008**

**DURING THE LAST FIVE YEARS:**

- Due to the net erosion in state agricultural research and extension appropriations from 2001 to 2005, the College faced a \$7.9 million reduction in program funding during this period. The College implemented a downsizing and cost cutting plan in 2001 and a partial hiring freeze beginning in 2002 to address this shortfall.
- Despite the \$4 million increase in state appropriations for FY2006/2007, the College continues operations with a **\$5.1 million reduction in program operating funds over the past 5 years.**
- In FY 2006/2007 the legislature increased the agricultural research and extension appropriation lines by \$2 million in each line. Approximately half of this increase was needed to cover operational cost increases in order to maintain current capacity. The remaining \$2.15 million is being invested in Pennsylvania priority areas listed below.

Renewable Energy

Food Safety/Quality

Pest Prediction and Response

Job, Economic, & Community Development

Environmental Issues

- The requested funds will be invested to replenish some of the lost capacity over these years, which include:
  - Laid off, collapsed or recycled 161 faculty, staff, and county educator position
  - Reduced support for graduate assistantships by \$846,360
  - Reduced fixed-term personnel costs by \$244,013.
  - Reduced operating budgets for supplies and travel by \$152,240

**IMPACT OF GOVERNOR'S FY2007/2008 BUDGET PROPOSAL**

- **For the fourth straight year, the Governor is proposing NO increase** in funding for Agricultural Research and Cooperative Extension. However, the legislature did provide a \$4 million increase last year.
- With anticipated operational cost increases for FY2007/2008 to maintain current College capacity, the Governor's proposal will result in an additional **shortfall of \$2.3 million in FY 2008, increasing the reduction in program dollars over the past six years to \$7.4 million.**

**NOTES:**

- Undergraduate tuition dollars do NOT fund Agricultural Research and Extension budgets. Tuition primarily supports the University Resident Instruction program.
- State appropriations provide essential base funding to maintain expertise and program support in order to respond quickly to issues important to the citizens of the Commonwealth.

**PENN STATE COLLEGE OF AGRICULTURAL SCIENCES**

**Study Comparing Annual Changes in College State Appropriation with Cost of  
Applicable Research and Extension Salary Increases and Fringe Benefits**

**Compares the Last Five Years with the Previous Five Years**

<u>As of July 1</u>	<u>Increase/ (Decrease)</u>	<u>Salary &amp; Fringe Benefits Increases</u>	<u>Balance for Program</u>
2006	\$4,000,000	\$1,848,000	\$2,152,000
2005*	1,018,000	2,134,000	(1,116,000)
2004**	1,515,000	2,284,000	(769,000)
2003	(815,000)	2,020,000	(2,835,000)
2002	<u>(334,000)</u>	<u>2,233,000</u>	<u>(2,567,000)</u>
<b>Last 5-Year Total</b>	<b>\$5,384,000</b>	<b>\$10,519,000</b>	<b>\$(5,135,000)</b>
2001	1,514,000	2,088,000	(574,000)
2000	2,208,000	1,831,000	377,000
1999	3,479,000	1,429,000	2,050,000
1998	1,412,000	1,368,000	44,000
1997	<u>1,427,000</u>	<u>1,294,000</u>	<u>133,000</u>
<b>Previous 5-Year Total</b>	<b>\$10,040,000</b>	<b>\$ 8,010,000</b>	<b>\$2,030,000</b>

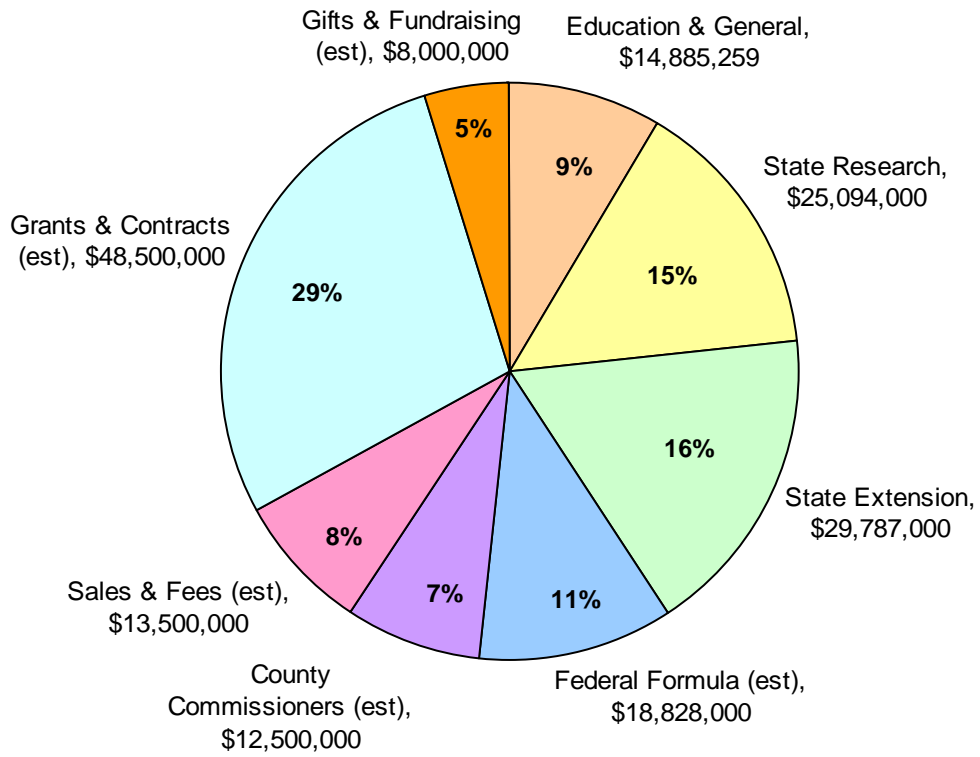
\* Ag line appropriations for 2005 increased \$0; University redistributed \$1,018,000 of State E & G increase

\*\* Ag line appropriations for 2004 increased \$379,000; University redistributed \$1,136,000 of State E & G increase

Note: The College had a reduction of program funding during the last five years totaling \$5,135,000.

The College's agricultural research and extension programs are NOT supported by undergraduate tuition dollars.

**College of Agricultural Sciences  
Budget Projections 2006/2007  
Total= \$171,094,259**





## **Penn State Ag Council** **Leadership Awards Nomination Form 2007**

The Penn State Agricultural Council leadership awards honor outstanding leaders in the agricultural community in Pennsylvania. Excellence in three categories is recognized: Leadership Award, Youth Leadership Award, and Leadership in Action Award.

- Awards:** The recipients are recognized and given an engraved plaque at the fall delegate meeting of the Penn State Ag Council.
- Number of Awards:** One per year in each category.
- Nominations:** Nominations are solicited from Penn State Ag Council member organizations and their membership. The nomination document should note which leadership award is being sought and should not exceed two pages. The nomination should also include one letter of support and may include up to three additional support documents such as, but not limited to, a publication, strategic plan, photo, news story, marketing piece, addition letters, etc.
- Selecting Body:** The selection committee is comprised of the Penn State Ag Council President and the Penn State Ag Council Membership Committee.
- Calendar:** Nominations are initially solicited at the spring Penn State Ag Council delegate meeting and must be submitted by August 1.
- Eligibility:** Any Pennsylvania citizen (or group) that is directly involved in agriculture, including, but not limited to, production, sales, promotion, policy, education, research, etc. may be nominated.
- Categories:**
- Penn State Ag Council Leadership Award**  
Criteria:
- *Demonstrates outstanding communication and advocacy skills.*
  - *Exhibits the highest levels of professionalism, performance, innovation, judgment, and problem-solving skills.*
  - *Encourages personal development, partnerships, collaboration, and respect.*
  - *Serves as a role model, mentor, diplomat, and inspiration.*
- Penn State Ag Council Youth Leadership Award**  
Criteria:
- *Is a student.*
  - *Includes criteria listed above for Leadership Award.*
- Penn State Ag Council Leadership in Action Award**  
Criteria:
- *Represents an organization, group, event, program, activity, strategy, advocacy, etc. that successfully advances leadership in agriculture and/or the future of agriculture in Pennsylvania.*
- Contact:** Mary Wirth ([mfw10@psu.edu](mailto:mfw10@psu.edu)), Penn State Ag Council, 229 Agricultural Administration Building, University Park, PA, 16802, Phone 814-867-1816, Fax 814-863-6152.



## **PENN STATE AG COUNCIL**

### **Ag Progress Days Banner Form**

Company/Organization Name:

---

Mailing Address:

---

---

Banner Contact Person:

---

Email: 

---

Phone: 

---

 Fax: 

---

We will supply a banner to the College by July 23.

If you choose to supply the College with a banner, after Ag Progress Days:

would you like your banner returned to you  
or  
 would you like us to keep it until next year?

Please return this form by July 9 to:

Rhonda R. Demchak  
Penn State Ag Council  
229 Ag Administration Building  
University Park, PA 16802  
Email: [rrr11@psu.edu](mailto:rrr11@psu.edu)  
Phone: 814-867-1816 Fax: 814-863-6152