

## Registration Form

Choose your preferred location.

Please register **10** days prior to the date of the session you use.

\_\_\_\_\_ Regional Learning Alliance,  
Cranberry, April 5

\_\_\_\_\_ Celebration Hall, State College,  
April 20

\_\_\_\_\_ Spring Garden, Harrisburg,  
May 10

\_\_\_\_\_ Victoria Inn and Suites, Pittston,  
May 24

Name \_\_\_\_\_

E-mail \_\_\_\_\_

County \_\_\_\_\_

### Investment:

\$20 *(Includes break, lunch, and all materials)*

### Send registration form and payment to:

Penn State Cooperative Extension  
220 Beaver Ave - Ste 200  
Monaca PA 15061

### Planning Committee

Mary Alice Gettings, Chair, Beaver County  
Roxanne Price, Co-chair, York County  
Deanna Behring, University Park  
Nancy Crago, Allegheny County  
Nancy Kadwill, Montgomery County  
Leon Ressler, Lancaster County  
Robin Rex, Columbia County  
Fay Strickler, Berks County

Financial support provided by:  
Office of International Programs  
College of Agricultural Sciences  
Northeast Regional Director's Office

This publication is available in alternative media on request.

The Pennsylvania State University is committed to the policy that all persons shall have equal access to programs, facilities, admission, and employment without regard to personal characteristics not related to ability, performance, or qualifications as determined by University policy or by state or federal authorities. The Pennsylvania State University does not discriminate against any person because of age, ancestry, color, disability or handicap, national origin, race, religious creed, sex, sexual orientation, or veteran status. Direct all inquiries regarding the nondiscrimination policy to the Affirmative Action Director, The Pennsylvania State University, 328 Boucke Building, University Park PA 16802-2801; Tel. (814) 865-4700/V, (814) 863-1150/TTY.

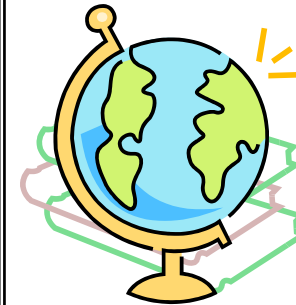
The Pennsylvania State University encourages qualified persons with disabilities to participate in its programs and activities. If you anticipate needing any type of accommodation or have questions about the physical access provided, please contact Mary Alice Gettings at 724-774-3003 in advance of your participation or visit.

**PENN STATE Making Life Better®**

*Provides 5.5 of your 8 Diversity Hours*

# Extension Reaching Out To Multicultural Communities: At Home and Abroad

## Coming April and May 2006



**Cranberry  
State College  
Harrisburg  
Pittston**

### Sponsored by:

Epsilon Sigma Phi  
Alpha Omicron Chapter  
Extension Leadership Team  
College of Agricultural Sciences Office of  
International Programs

**PENNSTATE**



an **OUTREACH** program of the College of Agricultural Sciences

## **Extension Reaching Out To Multicultural Communities: At Home and Abroad**

Are extension educators making choices and influencing others to make choices that will create a better, safer world for today's children and their children? Are we building and maintaining teams and relationships that will effectively solve current world problems? These questions bridge all extension disciplines and specialties—from agriculture, family and consumer sciences, and youth, to economic and community development areas.

*Extension Reaching Out to Multicultural Communities: At Home and Abroad* is a professional development session designed to meet the needs of all extension professionals—seasoned or relatively new to working with multicultural communities.

As the demographic profiles of families change, so do the communities in which they live. Extension professionals must understand the shifting needs of local communities. Only when we have this vital information can we deliver meaningful programs and services relevant to our audiences.

We must also understand the impacts of global trends. For example, the globalization of trade around the world will result in major changes in U.S. agriculture and agrarian communities. How can we prepare our extension organization and those we serve to meet the challenges?

The answer lies in developing our knowledge of the major players, the impacts of global trade, and learning about available resources.

Use the upcoming session to grow informed, to strengthen your programming abilities, and to tackle the issues we often face in working in communities with immigrant populations. If you're considering international travel, the session will address ways in which you can use your travel experiences to internationalize your program. There will also be a review of Penn State resources for international travel and ways you can meet your required diversity training.

Take advantage of this all-encompassing session and the opportunity to earn 5.5 diversity hours. Register now!

### **The goals of this workshop are for the Extension professional to:**

1. Define an Internationalizing Extension Program
2. Develop skills to address and discuss global issues
3. Enhance/strengthen skills to work with various cultures
4. Identify resources to internationalize your program
5. Provide 5.5 hours of diversity training

## **Day's Agenda**

**9:00—9:45 a.m.**

### **Reaching Out to Multicultural Communities**

*Deanne Behring, Director*  
Office of International Programs,  
College of Agricultural Sciences

**9:45—10:45 a.m.**

### **Building Cultural Competencies**

*Patreese Ingram, Ph.D*  
Associate Professor of Agricultural and  
Extension Education

**10:45—11:00 a.m.**

**Morning Break**

**11:00 a.m.—12:00 p.m.**

**Breakout Sessions**

\* **Session 1**

Exploring Cultural Perspectives of Families  
*Patreese Ingram and panel*

\* **Session 2**

Understanding Legal Issues of New Populations  
*Banci Tewold, Esq.*

**12:00—1:00 p.m.**

**Lunch**

**1:00—2:00 p.m.**

### **US and the World:**

### **Talking Global Issues with Americans**

*Deanna Behring and panel*

**2:00—2:45 p.m.**

### **Discovering Global Trade**

*David Blandford, Ph.D.*  
Professor of Agricultural Economics

*David Abler, Ph.D*

Professor of Agricultural, Environmental and  
Regional Economics and Demography

**2:45—3:45 p.m.**

### **Planning your International Travel**

*Deanna Behring and panel*